

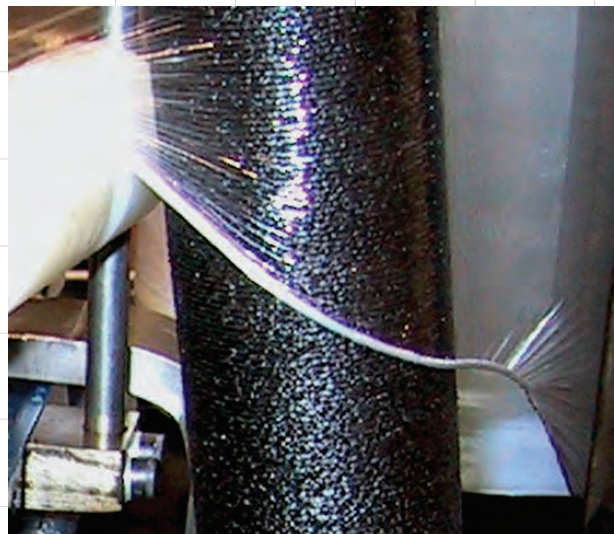
# Lantech<sup>®</sup>

## pallet grip<sup>®</sup>

# Lock Your Load to the Pallet!



Sudden stops, starts, or vibrations can cause loads to slide off their pallets unless you do something to stop it.



Pallet Grip rolls 4" to 6" of the film web into a tight, high strength, durable film cable.



Pallet Grip places the film cable around the shipping pallet and locks the load to it.



## Don't Ship Without Pallet Grip®!

### Without Pallet Grip

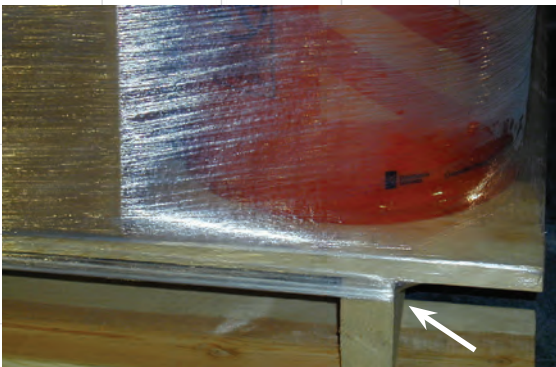


Product is inboard and not "locked" to the pallet with stretch film. The film is wrapped around the product only, creating the opportunity for the load to slide off the pallet.

### With Pallet Grip



Product is securely wrapped and tightly "locked" to the pallet with the film cable produced by Pallet Grip. The high strength film cable prevents the load from sliding off the pallet.



The rolled up film cable is driven down on the pallet to about an inch and a half below the topboards, where it can't be damaged by fork truck entry.

The film cable won't break on the corner of the pallet and works with inboard loads (up to six inches) and wing pallets.

## Don't Take More Risk Than You Have To!

**Millions of loads slide off their pallets during shipment each year causing billions of dollars of rework and waste.**

**Make sure your load is locked to its pallet with Pallet Grip®.**

*Pallet Grip is patented!*

*The US Patent Office recognized its uniqueness with Patent Number 7,568,327 B2 as has the Patent Office of the European Union with Patent No. EP 159938 and the Patent Office of Australia with Patent No. AU 2004209517.*

*Pallet Grip is a key LeanWrap™ technology element and is available on new Lantech stretch wrappers. It can also be retrofitted to many existing Lantech stretch wrappers.*

*For retrofit information, call our Retrofit Department 800-866-0322 prompt 4 or email at [retrofits@lantech.com](mailto:retrofits@lantech.com)*